

CSR CHARTER

L'ENFANT ROI.

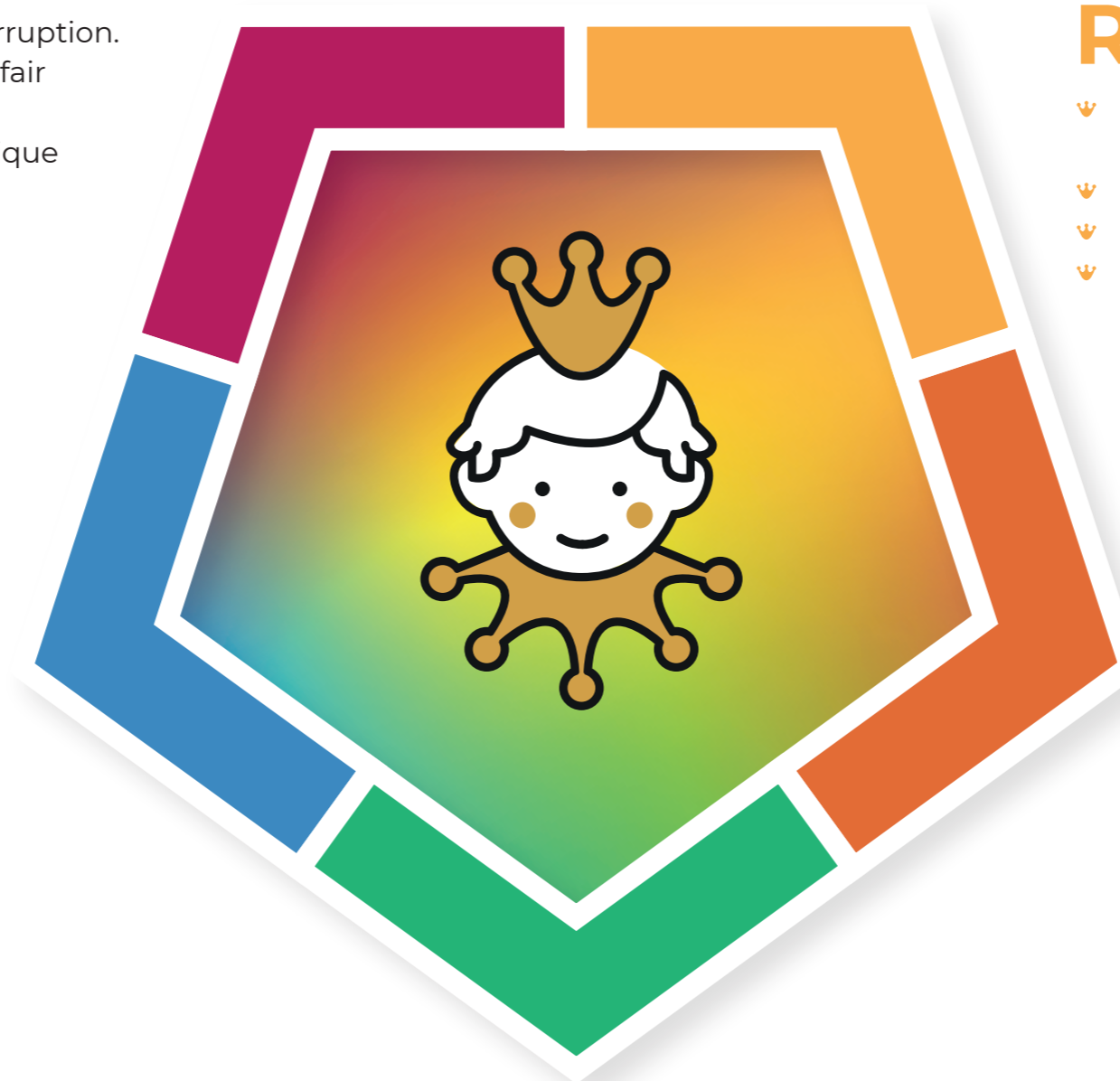
CRÈCHES MONTESSORI

GOVERNANCE

- Prohibit all abusive practices and all forms of corruption.
- Establish and maintain mutually beneficial and fair relationships with our suppliers.
- Centralise organisational management via a unique dedicated software package.
- Measure the satisfaction of our stakeholders.
- Get involved in philanthropic initiatives.

EMPLOYEES

- Set quality objectives.
- Guarantee training adapted to individual needs.
- Favour internal promotion.
- Ensure a good work-life balance.
- Maintain a high quality of life at work.
- Preserve a family business spirit.
- Ensure employee safety.



PARENT RELATIONSHIPS

- Provide transparent information about children's everyday lives.
- Offer support for parenthood.
- Ensure fair and equitable billing.
- Organiser des moments de partage.

CHILCARE

- To follow Maria Montessori's decalogue for educators.
- To ensure well-prepared ambience.
- To offer appropriate scientific pedagogical material.
- To ensure the physical and emotional safety of each child.
- To nurture each child's individuality.

ENVIRONMENT

- To support local businesses through our partnerships.
- To promote a circular economy by choosing sustainable options and minimizing waste.
- To optimize travel for our mobile teams.
- To use biodegradable products.

Réf :	DOC-ENT-09
Version :	01
Processus :	Entreprise